

Report-ready visual context for farmland monitoring.

Main takeaway: visible variation can frame an owner update; verify the field story with the tenant/operator before drawing conclusions.

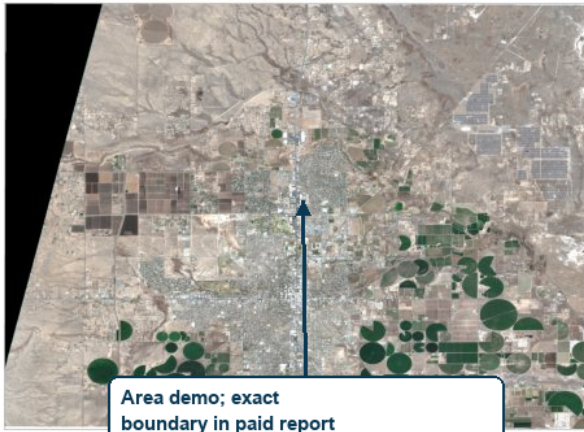
Field
Roswell NM farmland area - variability demo

Signal
Mixed vegetation signal

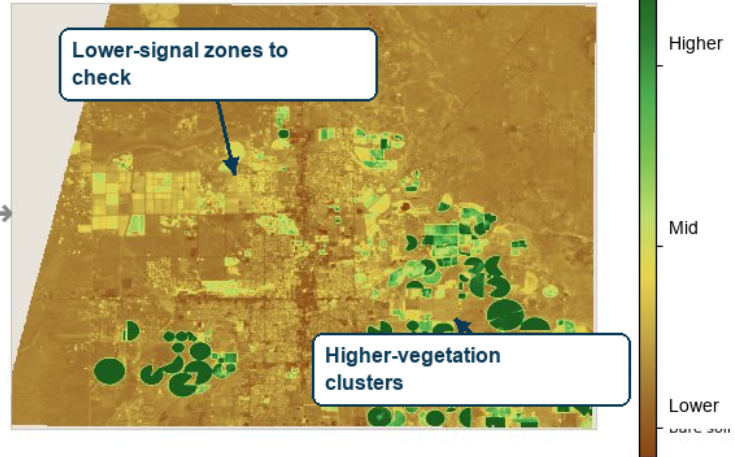
Date
Sentinel-2 visual: 2026-03-25

Boundary
Area-level demo; paid: exact boundary

RGB satellite view



Vegetation signal



Observed patterns

- The visual shows mixed vegetation signal across the farmland area.
- Lower-signal zones can become owner/operator follow-up points.
- The page gives the owner a concrete visual check without implying diagnosis.

Questions to check

- Does this match the tenant/operator's reported crop and irrigation status?
- Should the owner report mention any fieldwork, irrigation, or planting notes?
- Do we need updated parcel/field boundaries before using this in a paid report?

How to use this

- Paste into a landowner update as a visual monitoring page.
- Use it to show that satellite context was reviewed, with clear questions for the tenant/operator.
- Use the questions below with the tenant/operator.

What paid version adds

- Exact field or parcel boundary, not area-level demo.
- Time series for the selected field.
- Source/date/boundary notes for transparency.

Guardrail: Do not imply CropLens verified the field or knows more than the manager.

Limits

Demo sample only. Shows satellite-visible patterns and owner-report questions for further review. Not agronomy advice, crop diagnosis, yield forecast, or field verification.