

## Visual context only; not appraisal analysis.

**Main takeaway:** visible satellite context only; this page must not be used as valuation support or appraisal conclusion.

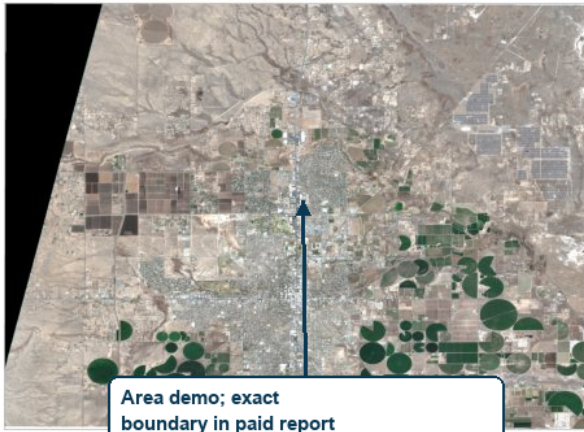
**Field**  
Roswell NM farmland area - variability demo

**Signal**  
Mixed vegetation signal

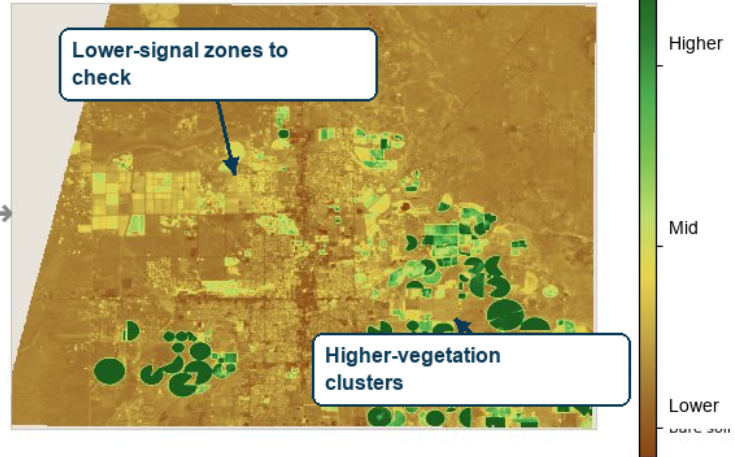
**Date**  
Sentinel-2 visual: 2026-03-25

**Boundary**  
Area-level demo; paid: exact boundary

### RGB satellite view



### Vegetation signal



#### Observed patterns

- The visual shows mixed satellite-visible field patterns across the farmland area.
- Source/date/boundary notes keep the exhibit factual and limited.
- The page can raise verification questions without supporting a value conclusion.

#### Questions to check

- Is this non-valuation visual exhibit appropriate under the appraiser's scope of work?
- Do public records, parcel data, and site observations align with the same field-use story?
- Should the appendix be excluded if boundaries or source data are not clear enough?

#### How to use this

- Use only as non-valuation visual context if it fits the appraiser's scope.
- Keep the appraiser responsible for any valuation judgment.
- Attach source/date/boundary notes so the exhibit stays factual and limited.

#### What paid version adds

- Exact field or parcel boundary, not area-level demo.
- Time series for the selected field.
- Source/date/boundary notes for transparency.

**Guardrail:** Must not be used as valuation support, appraisal analysis, or value conclusion.

#### Limits

Demo sample only. Shows satellite-visible factual context for further review. Must not be used as valuation support, appraisal analysis, highest-and-best-use support, value conclusion, or price support.